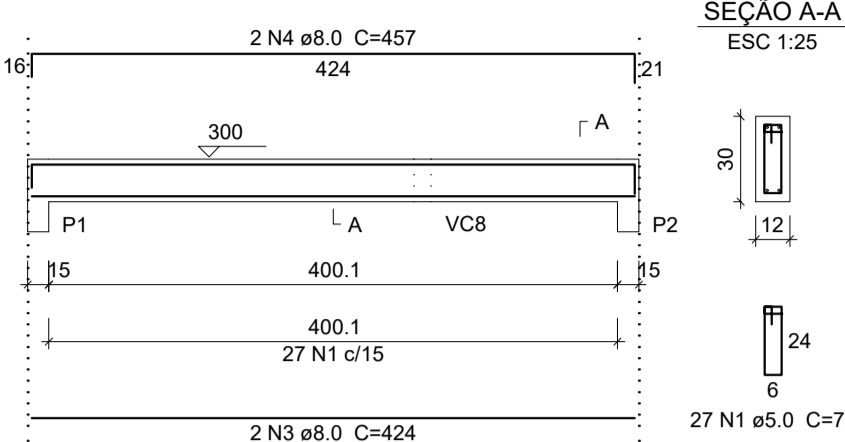


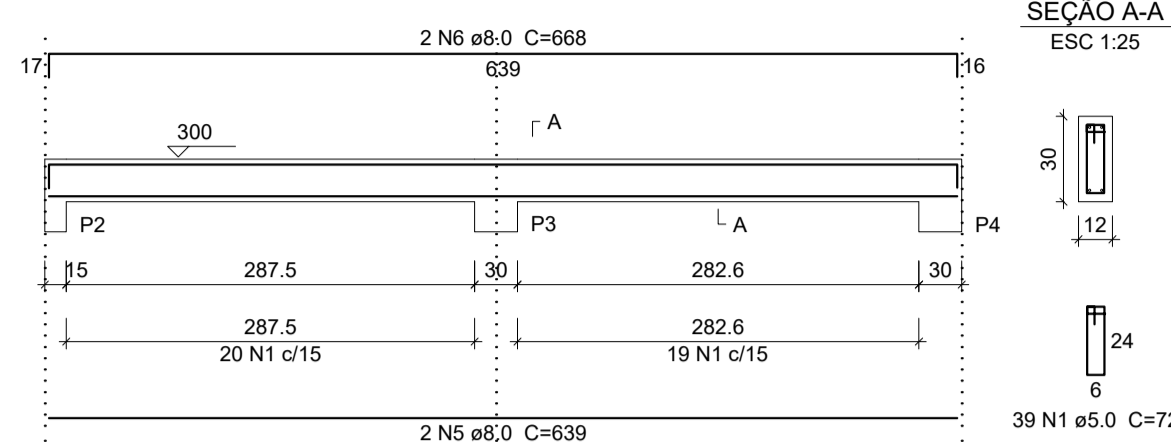
Forma do pavimento Cobertura escala 1:50

| Nome | Seção (cm) | Elevação (cm) | Nível (cm) |
|------|------------|---------------|------------|
| VC1  | 12x30      | 0             | 300        |
| VC2  | 12x30      | 0             | 300        |
| VC3  | 12x30      | 0             | 300        |
| VC4  | 12x30      | 0             | 300        |
| VC5  | 12x30      | 0             | 300        |
| VC6  | 12x30      | 0             | 300        |
| VC7  | 12x30      | 0             | 300        |
| VC8  | 12x30      | 0             | 300        |
| VC9  | 12x30      | 0             | 300        |
| VC10 | 12x30      | 0             | 300        |
| VC11 | 12x30      | 0             | 300        |

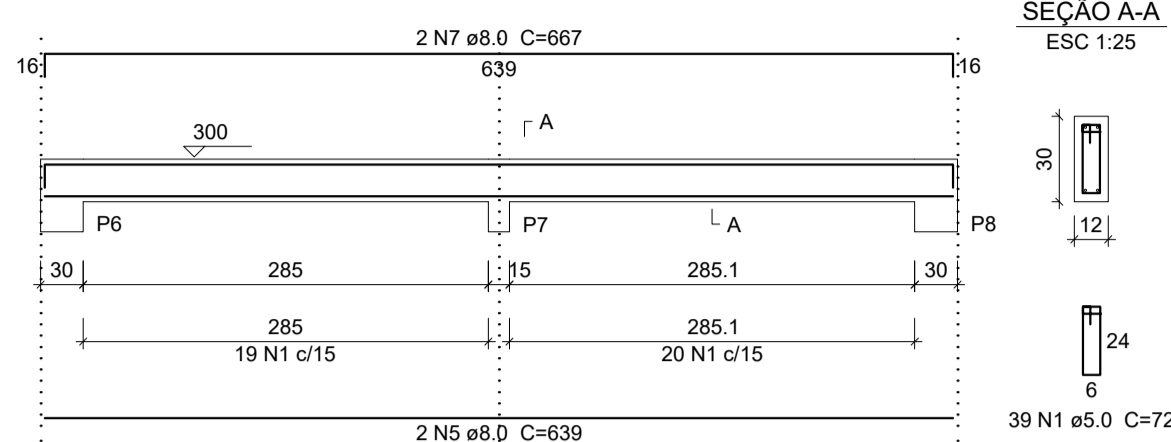
VC1 ESC 1:50



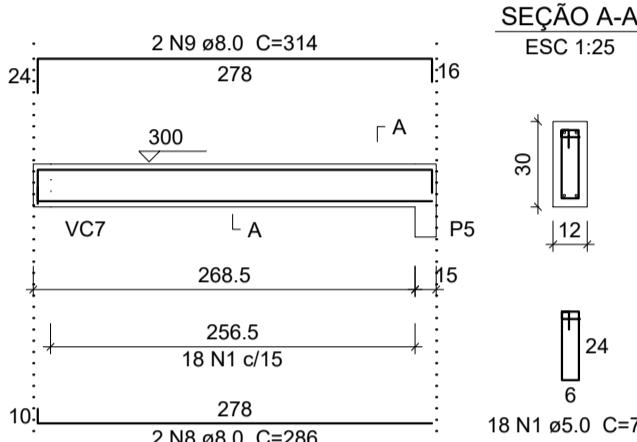
VC2 ESC 1:50



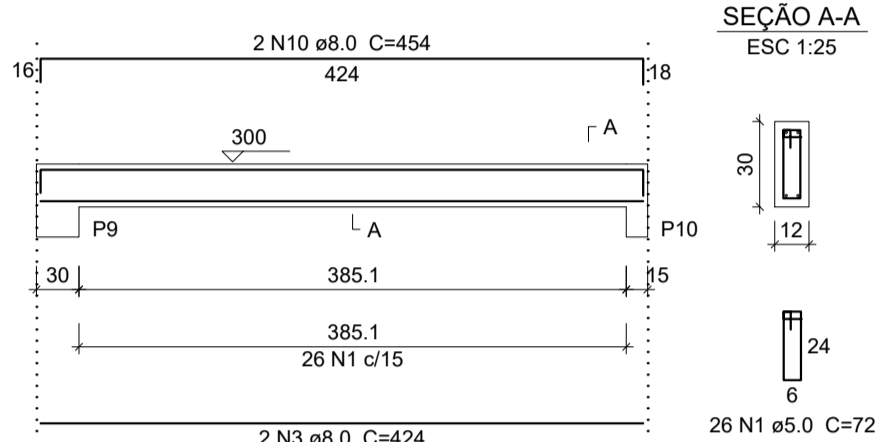
VC3 ESC 1:50



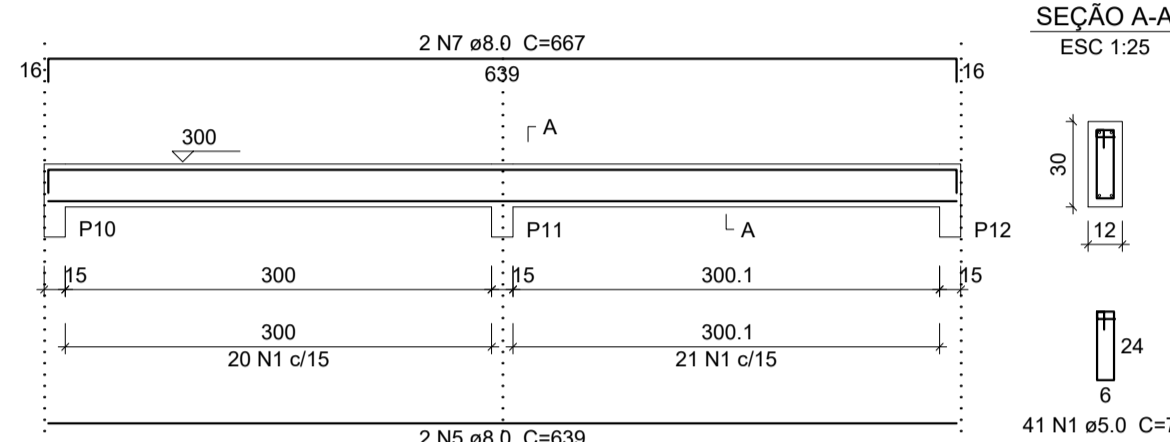
VC4 ESC 1:50



VC5 ESC 1:50



VC6 ESC 1:50



Relação do aço

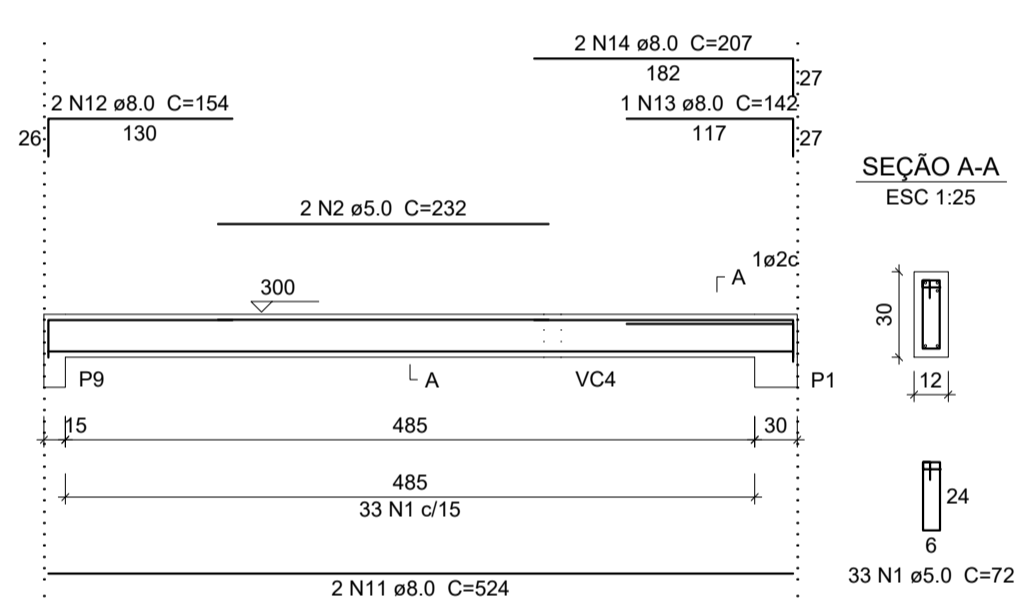
| ACO  | N  | DIAM (mm) | QUANT (Barras) | UNIT (cm) | C.TOTAL (cm) |
|------|----|-----------|----------------|-----------|--------------|
| CA60 | 1  | 5.0       | 318            | 72        | 22896        |
| CA50 | 2  | 5.0       | 2              | 232       | 464          |
|      | 3  | 8.0       | 4              | 424       | 1696         |
|      | 4  | 8.0       | 2              | 457       | 914          |
|      | 5  | 8.0       | 6              | 639       | 3834         |
|      | 6  | 8.0       | 2              | 668       | 1336         |
|      | 7  | 8.0       | 4              | 667       | 2668         |
|      | 8  | 8.0       | 2              | 286       | 572          |
|      | 9  | 8.0       | 2              | 314       | 628          |
|      | 10 | 8.0       | 2              | 454       | 908          |
|      | 11 | 8.0       | 4              | 524       | 2096         |
|      | 12 | 8.0       | 2              | 154       | 308          |
|      | 13 | 8.0       | 1              | 142       | 142          |
|      | 14 | 8.0       | 2              | 207       | 414          |
|      | 15 | 8.0       | 2              | 181       | 362          |
|      | 16 | 8.0       | 2              | 209       | 418          |
|      | 17 | 8.0       | 4              | 552       | 2208         |
|      | 18 | 8.0       | 2              | 374       | 748          |
|      | 19 | 8.0       | 2              | 402       | 804          |
|      | 20 | 8.0       | 2              | 532       | 1064         |

Resumo do aço

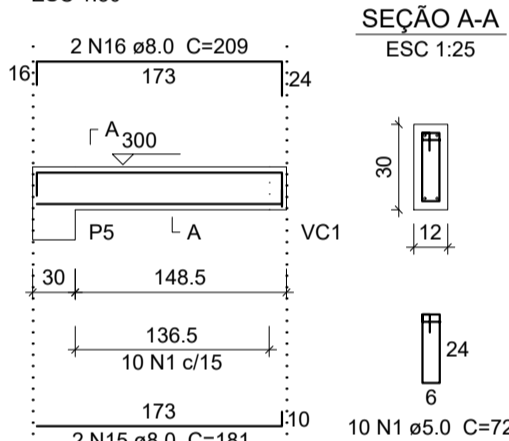
| ACO             | DIAM (mm) | C.TOTAL (m) | PESO (kg) |
|-----------------|-----------|-------------|-----------|
| CA50            | 8.0       | 211.2       | 83.3      |
| CA60            | 5.0       | 233.6       | 36        |
| PESO TOTAL (kg) |           |             |           |
| CA50            |           |             | 83.3      |
| CA60            |           |             | 36        |

Volume de concreto (C-25) = 1.88 m³  
Área de forma = 37.64 m²

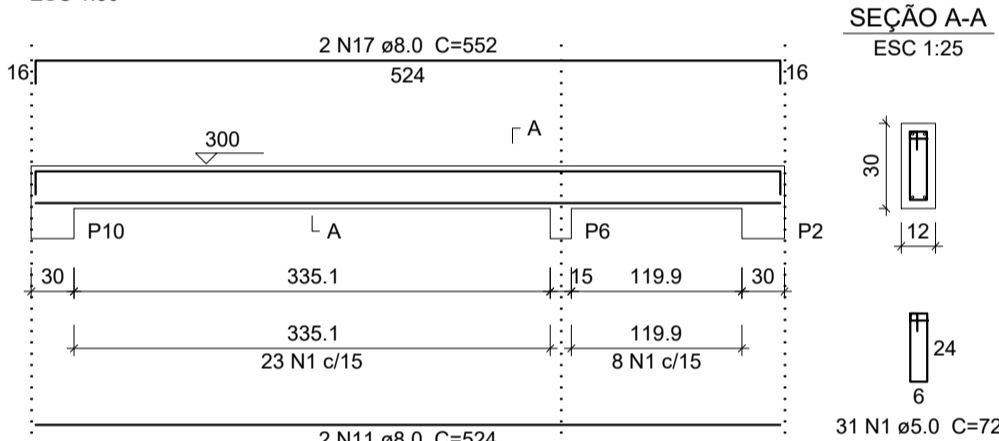
VC7 ESC 1:50



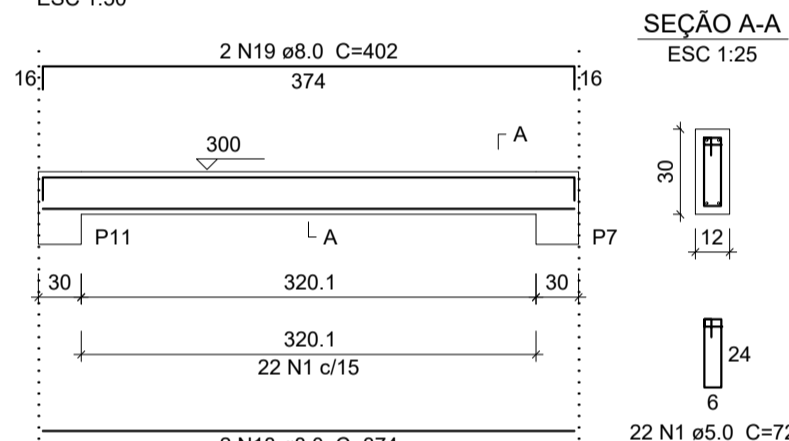
VC8 ESC 1:50



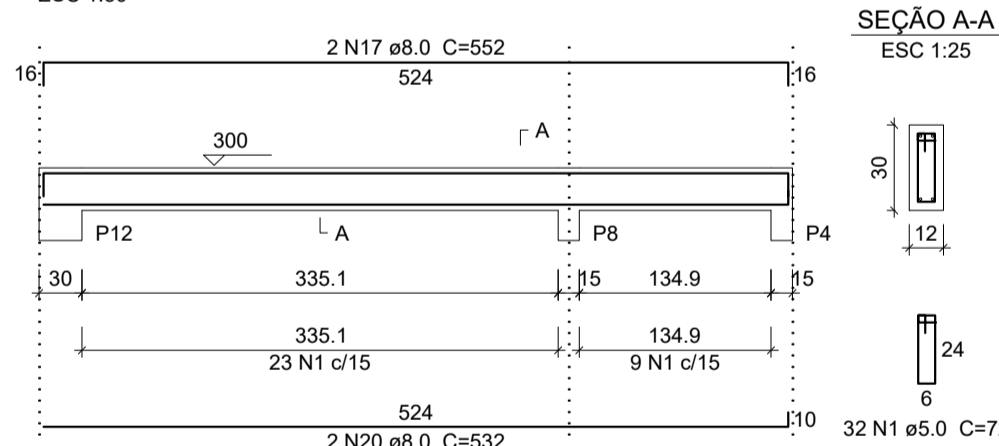
VC9 ESC 1:50



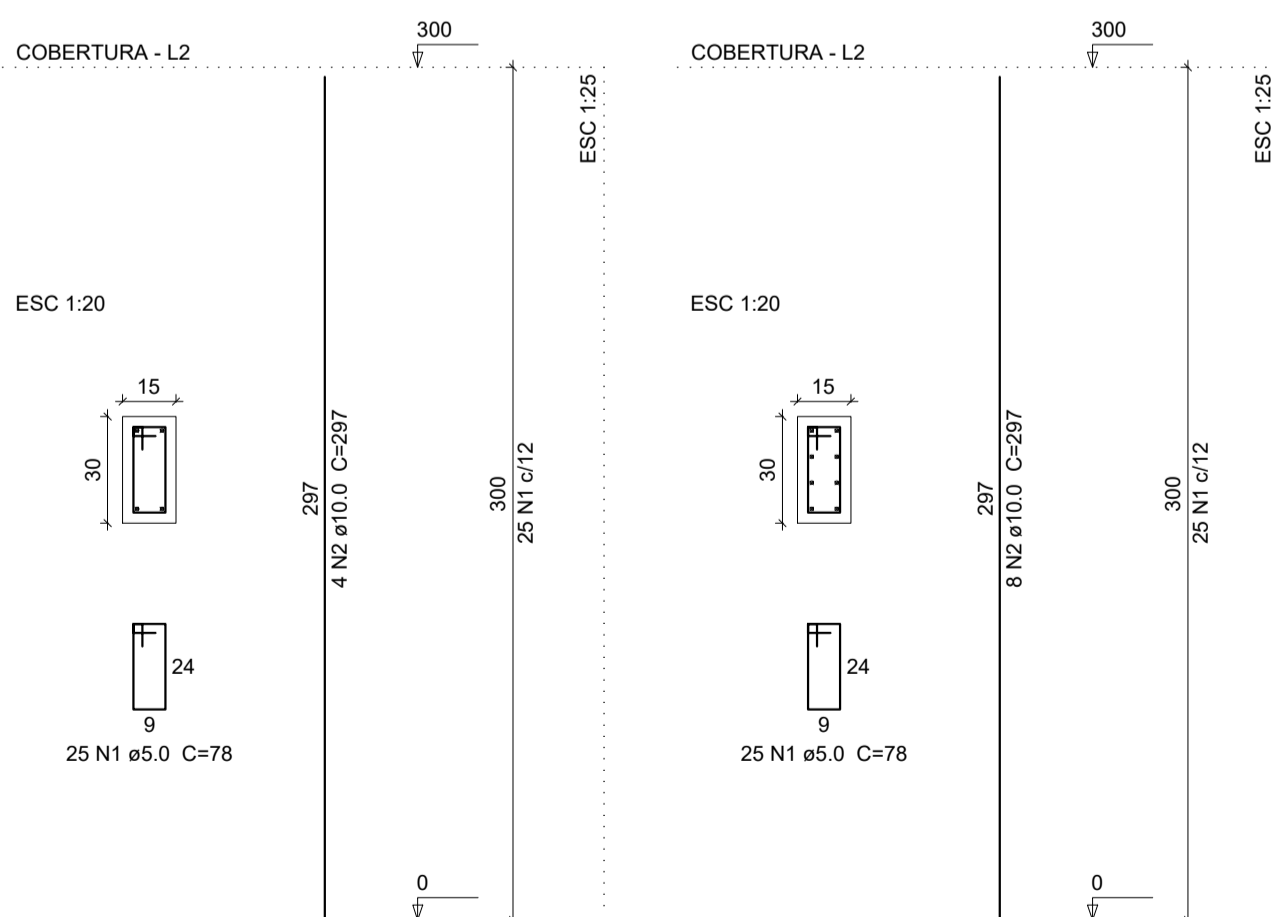
VC10 ESC 1:50



VC11 ESC 1:50



P1=P2=P3=P4=P5=P6=P7=P8=P10=P11=P12 P9



Relação do aço

| ACO  | N | DIAM (mm) | QUANT (Barras) | UNIT (cm) | C.TOTAL (cm) |
|------|---|-----------|----------------|-----------|--------------|
| CA60 | 1 | 5.0       | 300            | 78        | 23400        |
| CA50 | 2 | 10.0      | 52             | 297       | 15444        |

Resumo do aço

| ACO             | DIAM (mm) | C.TOTAL (m) | PESO (kg) |
|-----------------|-----------|-------------|-----------|
| CA50            | 10.0      | 154.5       | 95.2      |
| CA60            | 5.0       | 234         | 36.1      |
| PESO TOTAL (kg) |           |             |           |
| CA50            |           |             | 95.2      |
| CA60            |           |             | 36.1      |

Volume de concreto (C-25) = 1.62 m³  
Área de forma = 32.4 m²

PREFEITURA:

PROJETO ESTRUTURAL

OBRA: Ampliação da Creche Ambrosia Maria de Jesus  
PROPRIETÁRIO: Prefeitura Municipal de Carmolândia  
CIDADE: Carmolândia - TO  
TIPO DA OBRA: PÚBLICA

R.T. - PROJETO:

Engenheiro Civil Bruno Correio Santos - CREA: 201065/D-TO

PREFEITURA MUNICIPAL DE CARMOLÂNDIA  
CNPJ: 25.063.868/0001-61

CONTATO: (63) 98440-6047

QUADRO DE ÁREAS:  
VERIFICAR PROJETO ARQUITETONICO

CONTEUDO DA FOLHA:  
FORMA VIGAS COBERTURA  
DETALHAMENTO VIGAS COBERTURA  
DETALHAMENTO PILARES  
RESUMO DE AÇO

ENDEREÇO: CRECHE AMBROSIA MARIA DE JESUS  
BAIRRO: CENTRO

ESCALA: INDICADA  
CIDADE: CARMOLÂNDIA - TO  
CEP: 77.840-000

DATA: OUTUBRO /2019  
FOLHA NÚMERO: 02-02